

REEL EVENT



YVES SAINT LAURENT 2025 | HARDKAZE EVENT MONTPELLIER | PRIVATE WEDDING TENT SETUP | KENZO FASHION SHOW | ISSEY MIYAKE | TV SETS (La France a un incroyable talent) | JACQUEMUS FASHION SHOW

REEL EVENT

is an event agency specializing in the design and production of bespoke experiences for companies and institutions, in Europe and internationally.

Our strength lies in a strategic mindset, flawless execution, and an unwavering attention to detail.

With over 10 years of hands on experience, we create events where every decision serves a clear purpose aesthetic, logistical, human, and environmental.

What we do

We manage the entire event lifecycle with a single point of contact and a fully integrated, end-to-end approach.

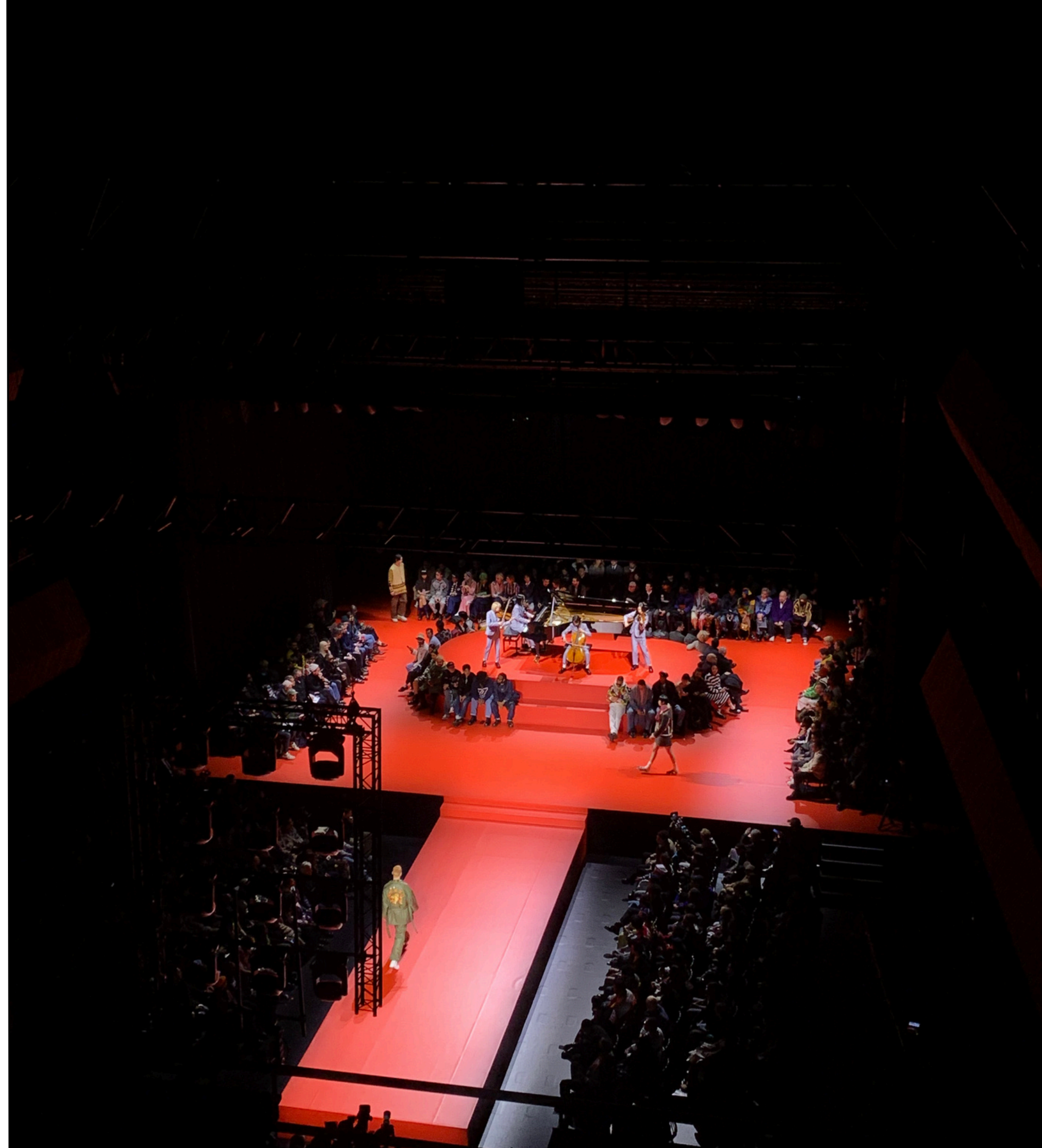


Logistics & Production

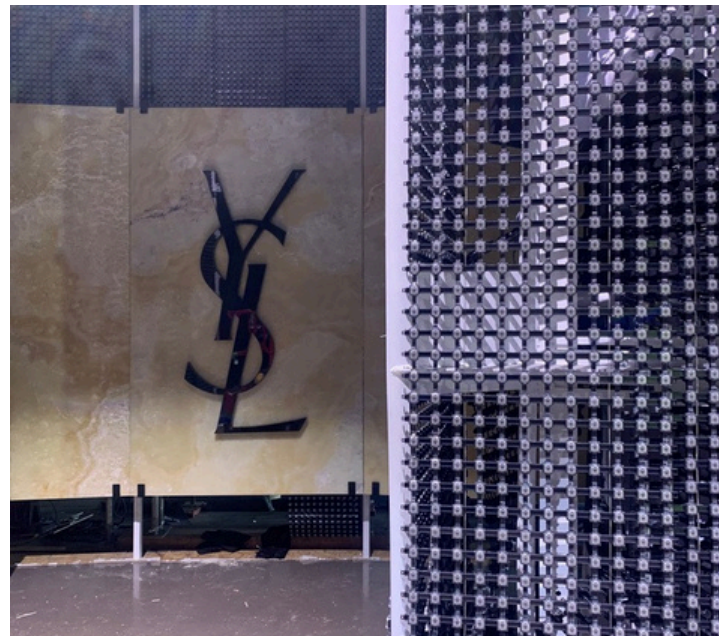
The success of any event is built on the quality of its execution. Behind every seamless experience, every respected timeline and every perfectly managed detail lies a rigorous organization and a production process driven with precision.

At REEL EVENT, we act as a trusted operational partner for brands, institutions, agencies and event organizers. Our role is to oversee the complete coordination of projects while ensuring efficient management of human resources, technical requirements and logistical operations throughout every stage of the event lifecycle.

From initial planning to final dismantling, we implement proven working methods that allow us to anticipate challenges, secure operations and deliver flawless execution.



YVES SAINT LAURENT FASHION SHOW



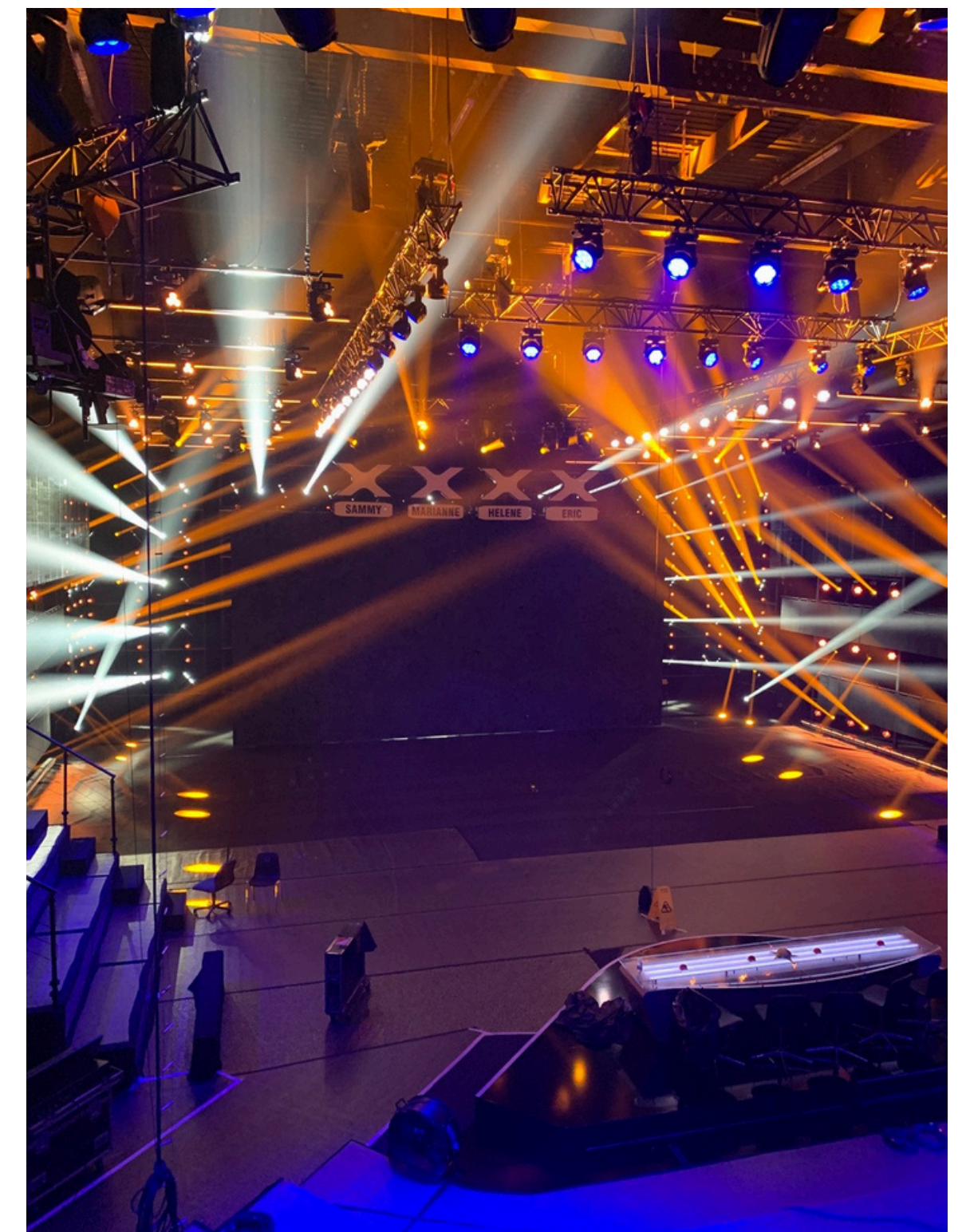
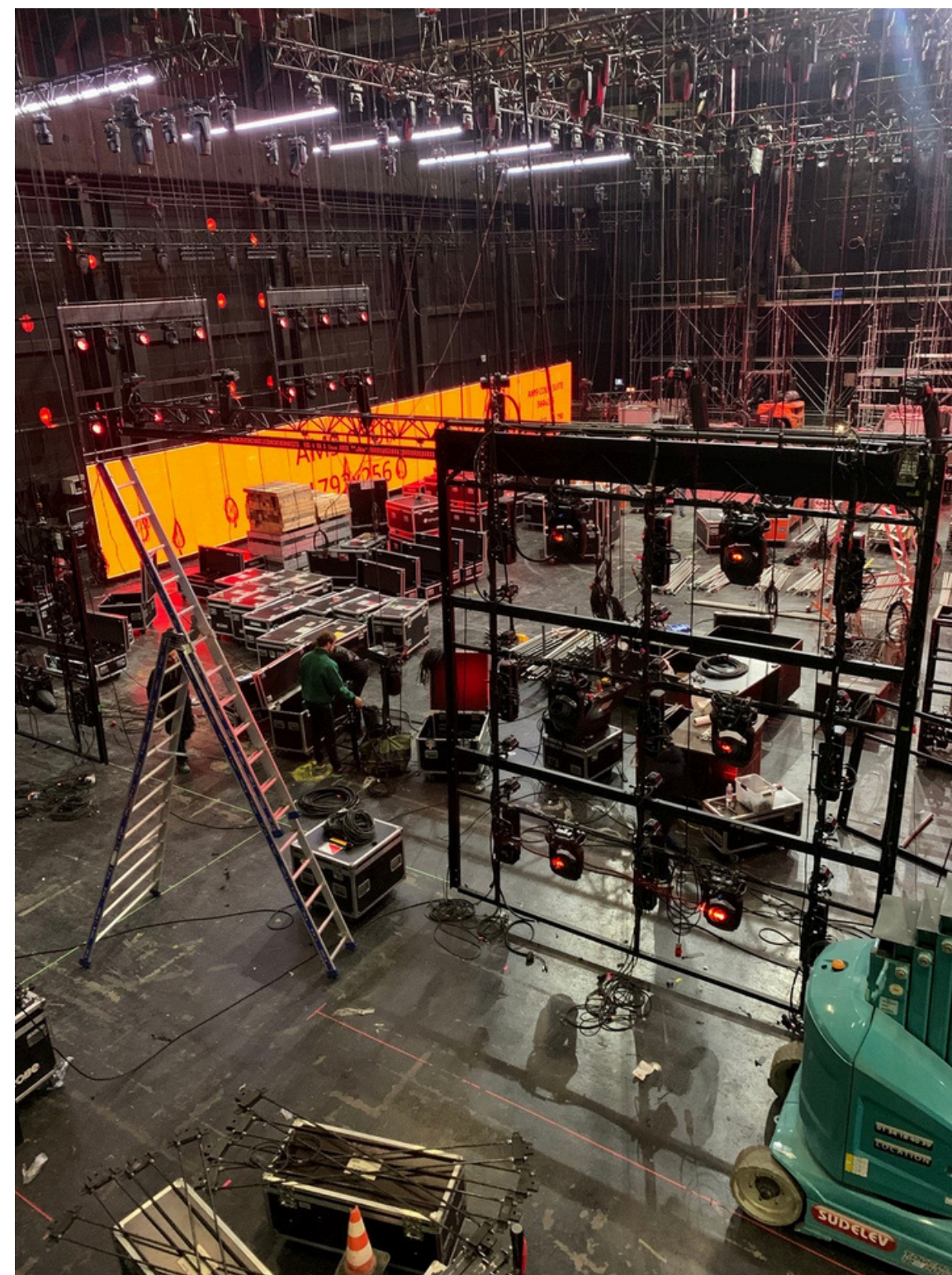
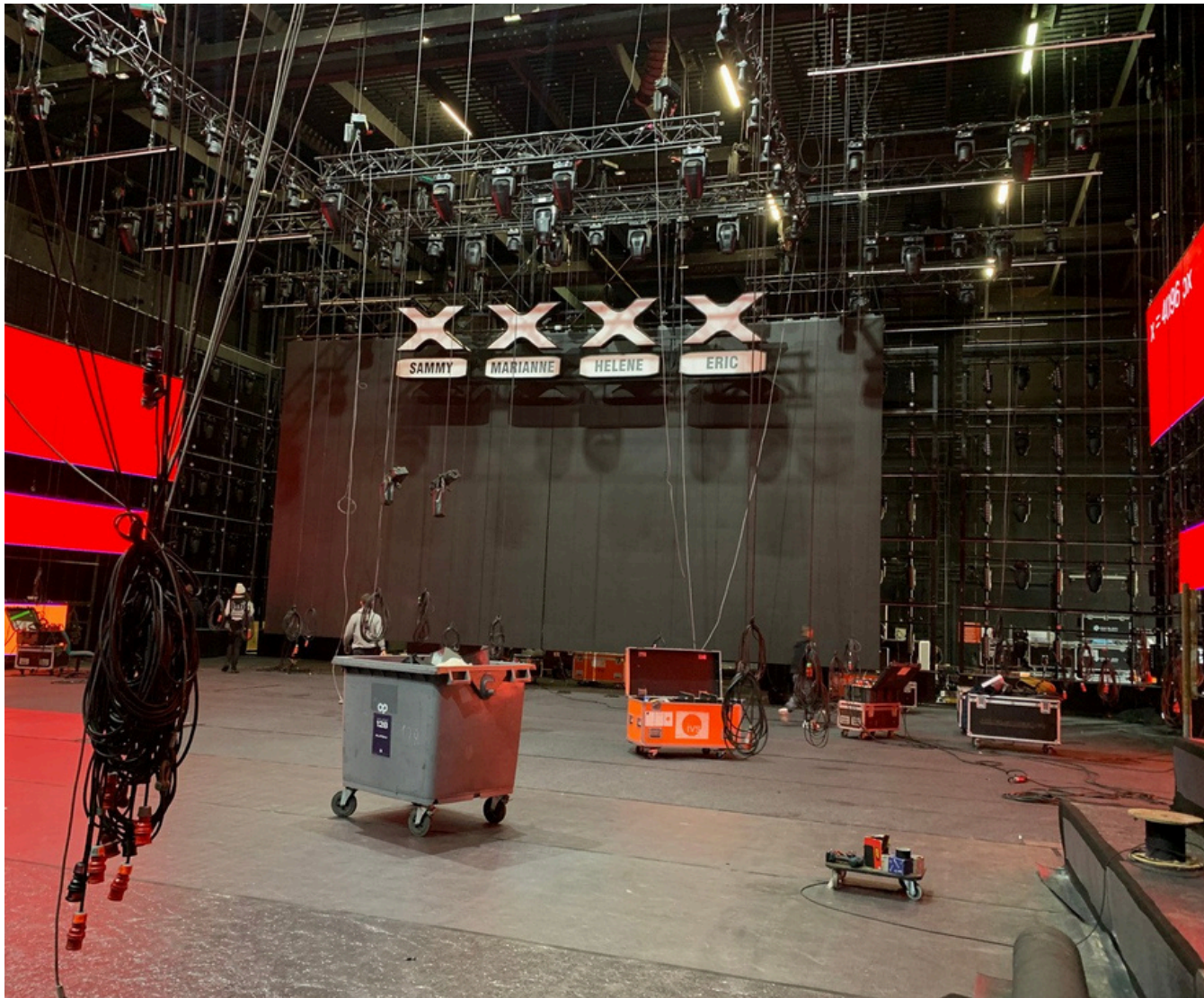
Our services include

- Analysis of project objectives and operational requirements
- Development of production strategies tailored to the specific goals of each event
- Creation and management of detailed production schedules and timelines
- Selection, negotiation and coordination of technical and logistical partners
- Management of on-site teams including project managers, coordinators, technicians, hosts and operational staff
- Planning and supervision of equipment, materials and participant flows
- Coordination of transportation, transfers and guest logistics
- Oversight of installation, live operations and dismantling phases
- Budget monitoring and resource optimization
- Implementation of quality control procedures and risk management plans
- Dedicated on-site supervision to ensure smooth execution at every stage



TV SETS

La France a un incroyable talent



Furniture & Event Design

The environment in which an event takes place has a direct impact on how a brand is perceived, how participants engage with the experience and how effectively key messages are communicated.

Event design goes far beyond aesthetics. It is a powerful tool that brings meaning to a space, strengthens brand identity and creates memorable experiences that leave a lasting impression.

At REEL EVENT, we design elegant, functional and immersive environments that align with the objectives of each project while taking into account visitor experience, operational requirements and technical constraints.

Every space is conceived as a journey where each element contributes to a cohesive and engaging experience.



ISSEY MIYAKE FASHION SHOW



Furniture & Event Design

The environment in which an event takes place has a direct impact on how a brand is perceived, how participants engage with the experience and how effectively key messages are communicated.

Event design goes far beyond aesthetics. It is a powerful tool that brings meaning to a space, strengthens brand identity and creates memorable experiences that leave a lasting impression.

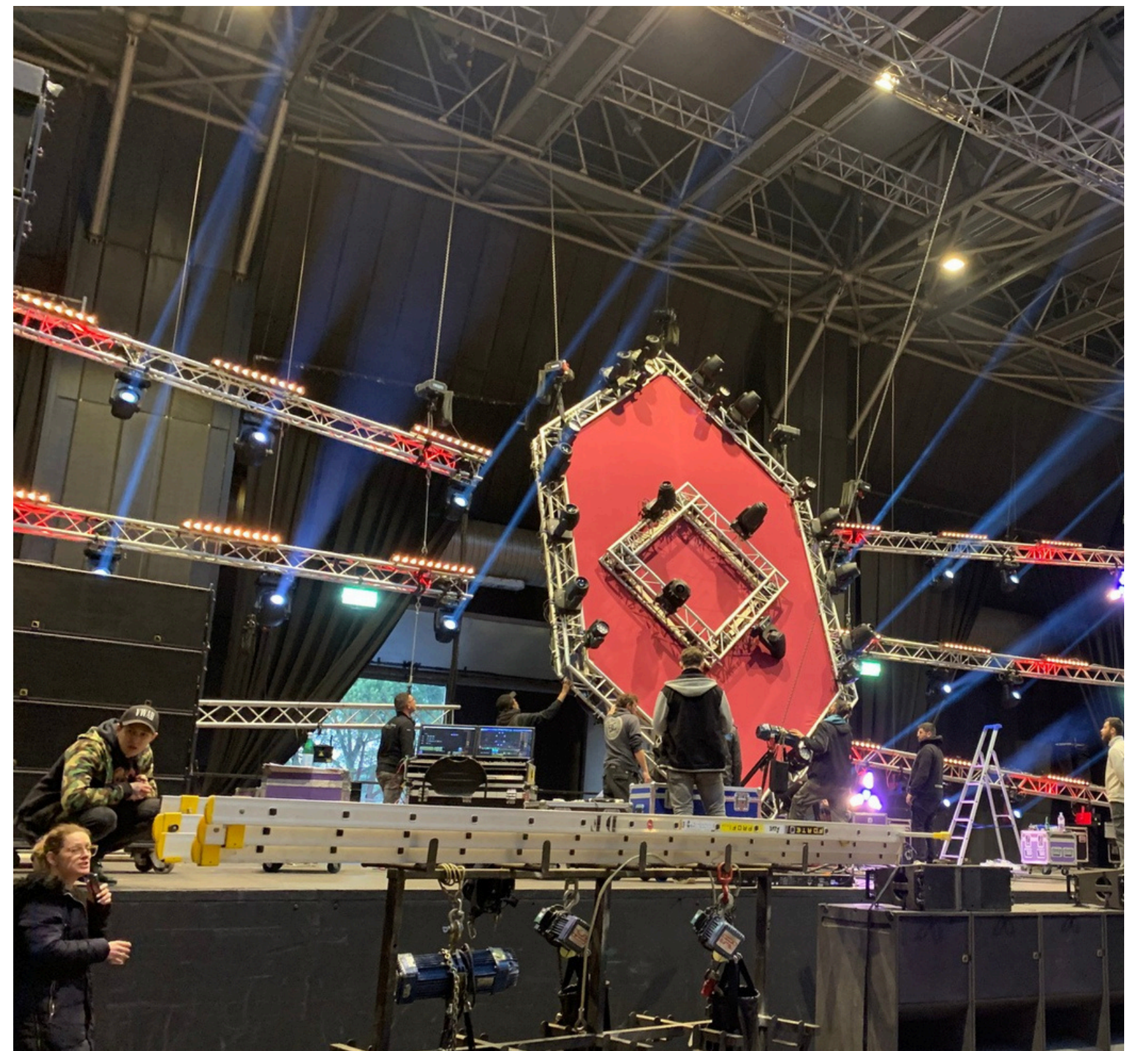
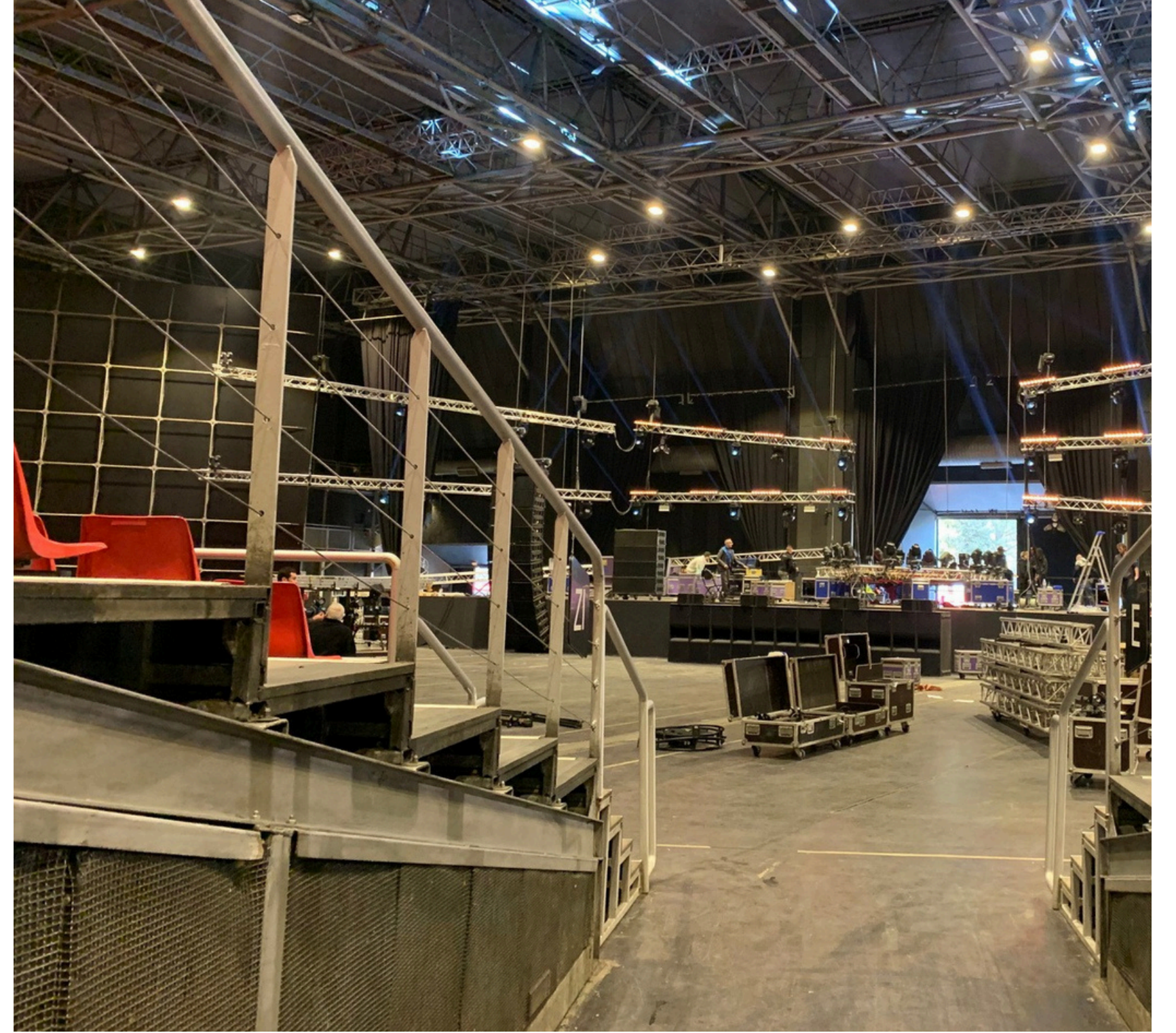
At REEL EVENT, we design elegant, functional and immersive environments that align with the objectives of each project while taking into account visitor experience, operational requirements and technical constraints.

Every space is conceived as a journey where each element contributes to a cohesive and engaging experience.



HARDKAZE FESTIVAL

Music Festival

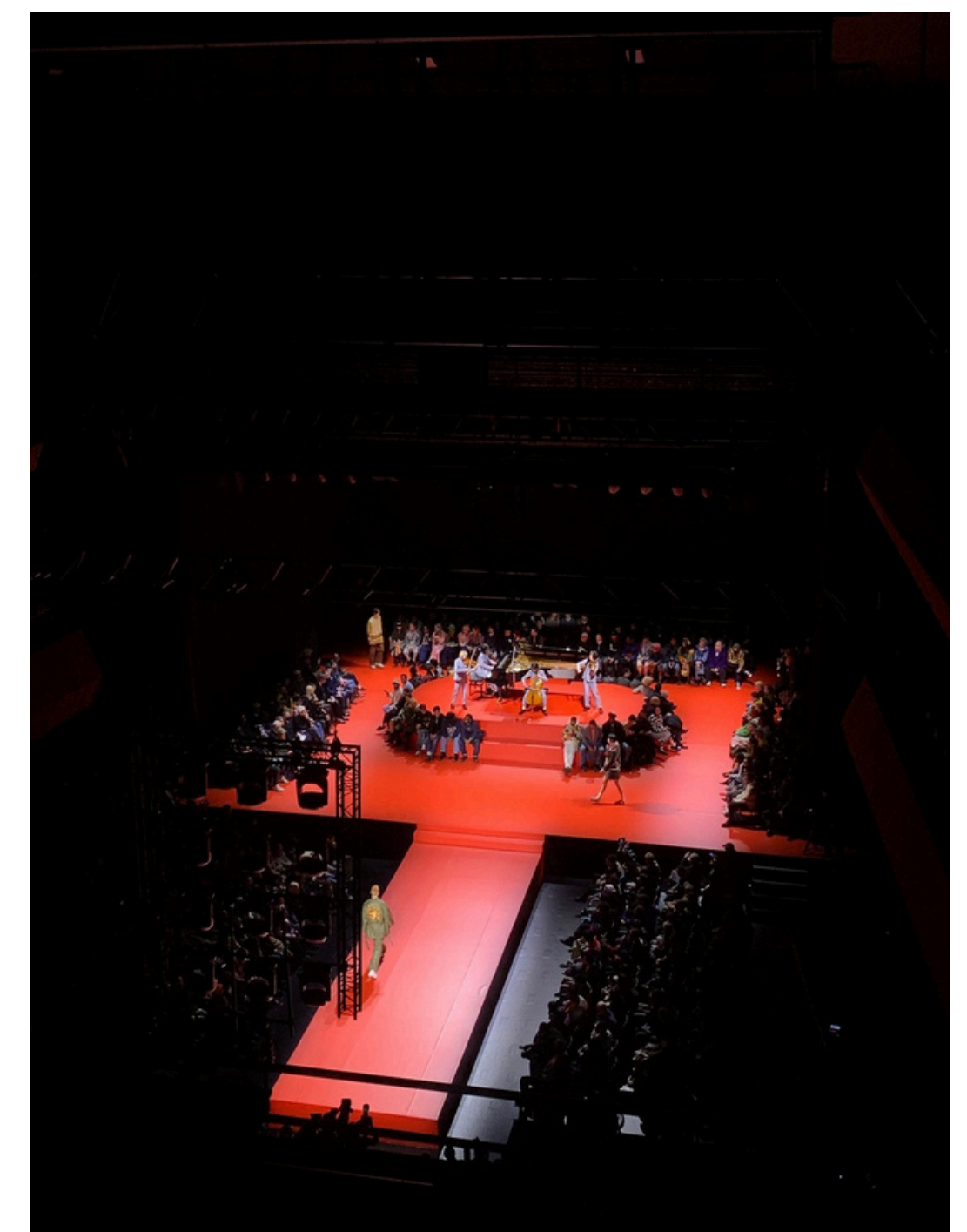
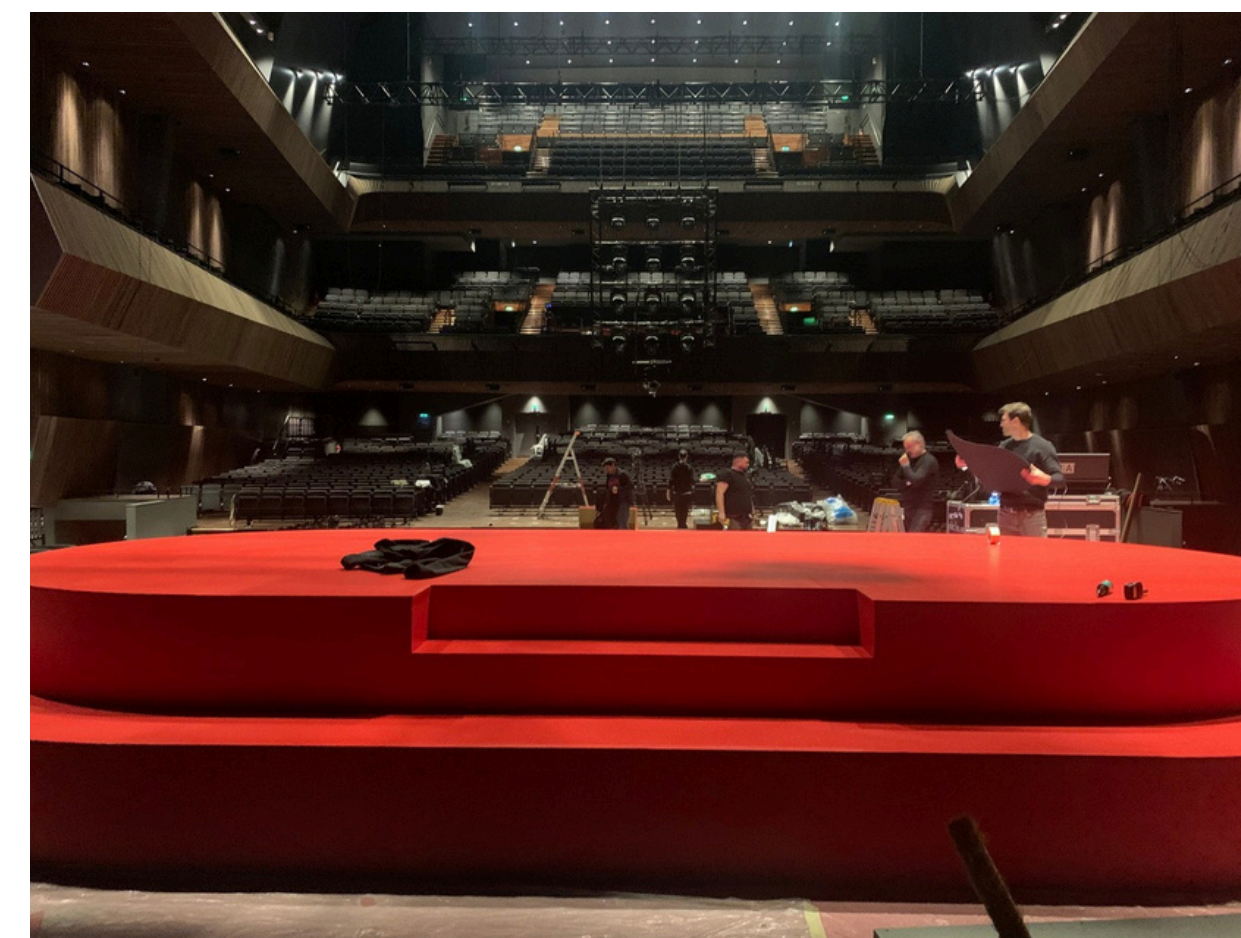
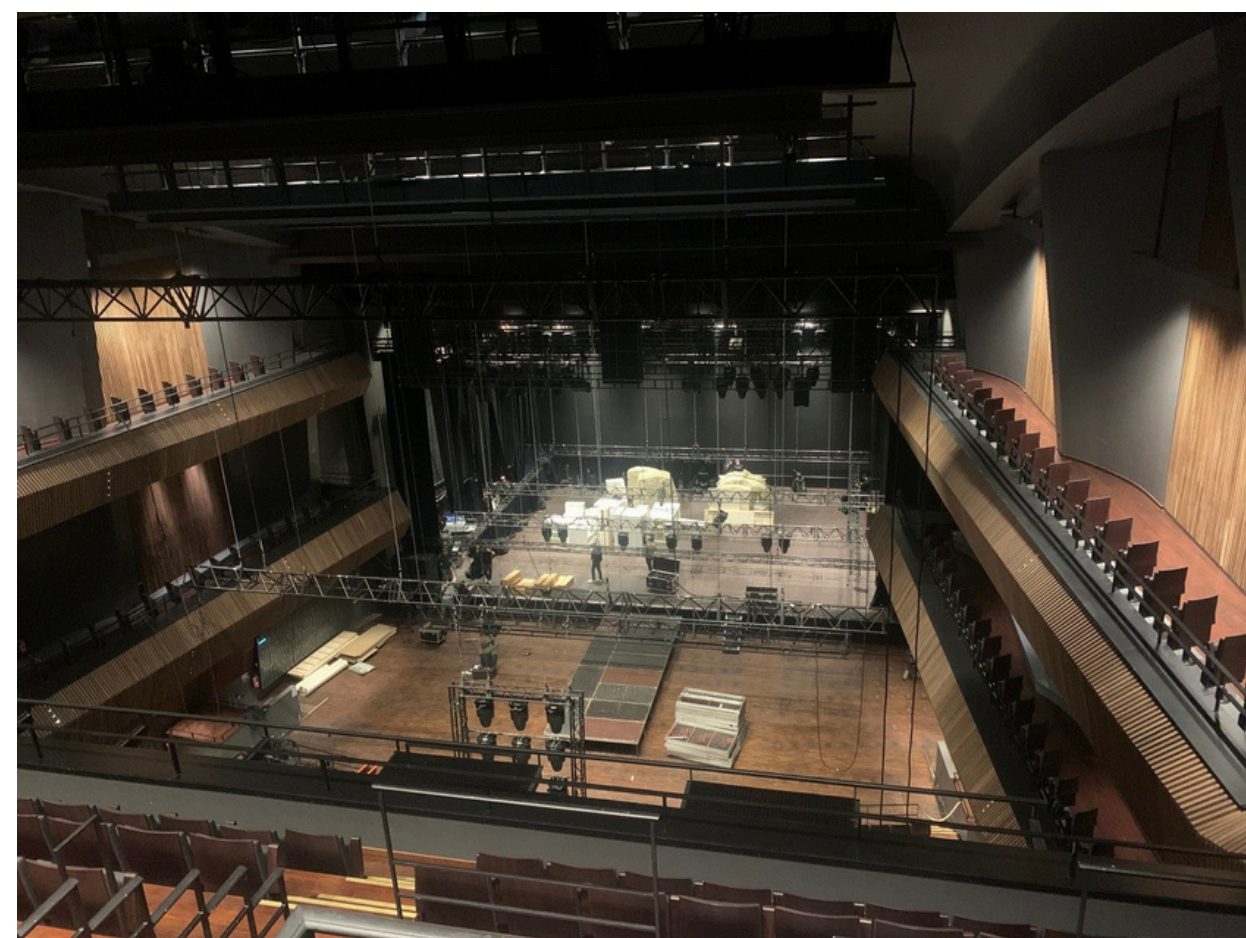


Furniture & Event Design

- Venue analysis and assessment of technical and operational requirements
- Design and development of bespoke event environments
- Selection of premium furniture aligned with brand positioning and event objectives
- Creation of immersive atmospheres and visual concepts
- Design and implementation of exhibition stands, partner villages, VIP areas, networking spaces and reception zones
- Development of custom branding and decorative elements
- Integration of audiovisual, digital and interactive technologies into the overall experience
- Enhancement of spaces through a thoughtful combination of materials, textures, lighting and spatial design
- Optimization of attendee journeys and circulation flows
- Coordination of all stakeholders involved in venue transformation and space planning



KENZO FASHION SHOW



JACQUEMUS FASHION SHOW

Fashion Show | Versailles



Our approach combines creativity, functionality and operational efficiency to deliver environments that are both visually impactful and highly effective.

We pay particular attention to the overall consistency of each project, ensuring that every detail contributes to the experience and reinforces the client's image and objectives.

This commitment to excellence allows us to support agencies, brands and event organizers looking for a reliable partner capable of managing both the creative and operational dimensions of event environments.

Because a successful event is not only defined by what people see but by what they experience and remember, we approach every project as a complete journey where every detail contributes to creating meaningful and lasting connections.



The background features several overlapping geometric shapes in shades of purple and blue. On the left, there is a large, curved shape resembling a stylized 'C' or a partial circle. To its right, there are three triangular shapes pointing towards the center. The overall aesthetic is modern and abstract.

LEGAL NOTICE

All photographs and visuals presented in this portfolio are the exclusive property of REEL EVENT.

Any reproduction, distribution, modification, or use, even partial, without prior written authorization from REEL EVENT is strictly prohibited and may result in legal action in accordance with intellectual property law.

© REEL EVENT 2025–2026 – All rights reserved.

Reel Event

AGENCE EVENEMENTIEL
conception & production sur mesure



**Des événements pensés pour servir vos
objectifs, marquer les esprits et valoriser
votre image.**

REEL EVENT

accompagne les entreprises et institutions
dans la création d'événements sur
mesure, en France et à l'international.

Notre force :

une approche stratégique, une exécution irréprochable et une
attention constante aux détails.

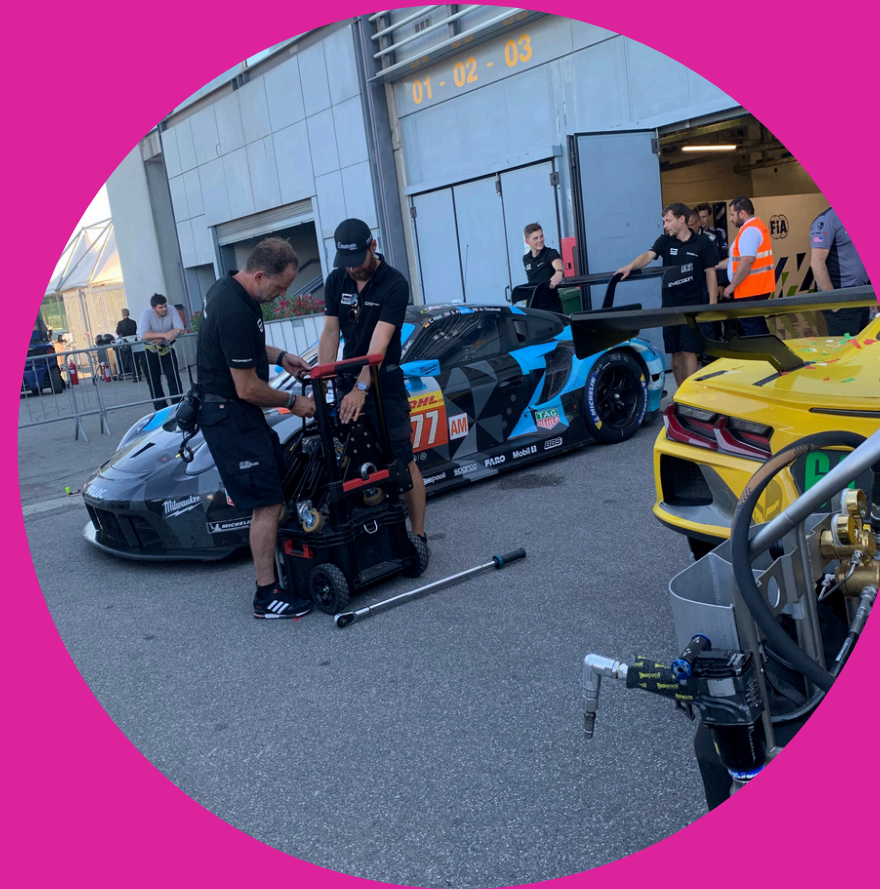
Depuis plus de 10 ans, nous concevons des expériences
évènementielles à forte valeur ajoutée, où chaque choix a un
sens : esthétique, logistique, humain et environnemental.

Ce que nous faisons pour vous
Nous intervenons sur l'ensemble de
la chaîne évènementiel
avec un interlocuteur unique et une
gestion clé en main.



ÉVÉNEMENTIEL CORPORATE

- Séminaires & conférences
- Team building & incentives
- Lancements de produits & soirées d'entreprise



CULTURE, SPORT & EXPÉRIENCES

- Événements culturels et institutionnels
- Défilés, showcases, vernissages
- Événements sportifs et formats immersifs





Notre valeur ajoutée

Créativité utile

Des concepts sur mesure, pensés pour vos enjeux et votre image.

Maîtrise opérationnelle

Une organisation fluide, rigoureuse et anticipée.

Exigence esthétique

Des choix précis en scénographie, mobilier et mise en espace.

Engagement responsable

Une attention portée à l'impact environnemental : sélection de partenaires engagés, optimisation des ressources et réutilisation du matériel, sans compromis sur la qualité.

LOGISTIQUE & PRODUCTION

Nous assurons une coordination globale, du brief à la réalisation :

- Pilotage des prestataires et des équipes
- Suivi budgétaire et gestion des imprévus
- Transport et organisation des flux

MOBILIER & SCÉNOGRAPHIE

- Mobilier événementiel design et premium
- Stands et structures modulables ou sur mesure
- Décors et ambiances cohérents avec votre identité
- Harmonisation des matières, couleurs et volumes

Chaque détail est pensé pour offrir une expérience élégante, fluide et cohérente.





Direction

**Vincent Muller
Directeur Général**

**Plus de 10 ans d'expertise en conception et production
événementielle.**

 **06 18 72 17 02**

 **contact@reel-event.fr**

 **reel-event.fr**

France & International